

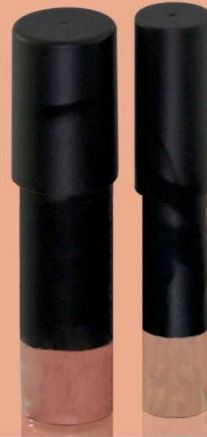
Rectan  
gular



Round  
Compact



Lipstick  
Pen



Bottles  
Series



Jar  
Series



www.singpen.com

SING PEN INTERNATIONAL TECHNOLOGY CO., LTD

www.singpen.com.tw

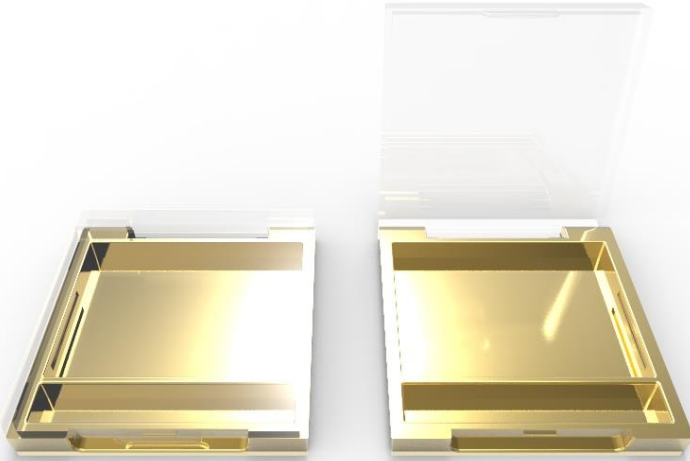
SING PEN TAIWAN CO., LTD.

# Product Catalog



number	page	number	page	number	page	number	page
E505D	<a href="#">P3</a>	P121	<a href="#">P19</a>	P199B	<a href="#">P35</a>	P252	<a href="#">P51</a>
E725	<a href="#">P4</a>	P122	<a href="#">P20</a>	P203	<a href="#">P36</a>	P253	<a href="#">P52</a>
E506	<a href="#">P5</a>	P147 👑	<a href="#">P21</a>	P212	<a href="#">P37</a>	P254	<a href="#">P53</a>
E506A	<a href="#">P6</a>	P159	<a href="#">P22</a>	P218	<a href="#">P38</a>	P258	<a href="#">P54</a>
E506B 👑	<a href="#">P7</a>	P160	<a href="#">P23</a>	P226	<a href="#">P39</a>	P260	<a href="#">P55</a>
E506C	<a href="#">P8</a>	P160A	<a href="#">P24</a>	P227	<a href="#">P40</a>	P261	<a href="#">P56</a>
E709 👑	<a href="#">P9</a>	P162 👑	<a href="#">P25</a>	P234	<a href="#">P41</a>	P262	<a href="#">P57</a>
E712	<a href="#">P10</a>	P164 👑	<a href="#">P26</a>	P235	<a href="#">P42</a>	SP-A01A	<a href="#">P58</a>
E720 👑	<a href="#">P11</a>	P165A 👑	<a href="#">P27</a>	P237	<a href="#">P43</a>	SP-A01B	<a href="#">P59</a>
E758	<a href="#">P12</a>	P165B 👑	<a href="#">P28</a>	P243	<a href="#">P44</a>	SP-A01C	<a href="#">P60</a>
E758A 👑	<a href="#">P13</a>	P165C 👑	<a href="#">P29</a>	P246	<a href="#">P45</a>	SP-A01D	<a href="#">P61</a>
P101	<a href="#">P14</a>	P165D 👑	<a href="#">P30</a>	P247	<a href="#">P46</a>	SP-A01E	<a href="#">P62</a>
P104 👑	<a href="#">P15</a>	P165E 👑	<a href="#">P31</a>	P248	<a href="#">P47</a>		
P105 👑	<a href="#">P16</a>	P165F 👑	<a href="#">P32</a>	P249	<a href="#">P48</a>		
P108	<a href="#">P17</a>	P194	<a href="#">P33</a>	P250	<a href="#">P49</a>		
P111	<a href="#">P18</a>	P199	<a href="#">P34</a>	P251	<a href="#">P50</a>		

# E505D square compact



- ✓ It is suitable for foundation powder
- ✓ The hinge is hinge-pin and the closure system has an 'finger recess' design.

Product number	Dimension	Material	
		cover	base
E505D	57.2.x 55.1 x 12.3	SAN+ABS	SAN+ABS
	pan well 49.28 x 37.31 x 5 (capacity appr.9ml)		

## E725 square compact



- ✓ It is suitable for foundation powder
- ✓ The hinge is hinge-pin and the closure system has an 'finger recess' design.

Product number	Dimension	Material			Hinge breakage
		cover	window	base	push hinge area
E725	67.38 x 67.38 x 12.3	SAN+ABS	SAN	SAN+ABS	≥1.8kgf
	pan well 52.6 x 52.6 x 4.5 (capacity appr.12ml)				

# E506 rectangular compact



- ✓ It is suitable for eye shadow, blush, lip-cream and eye shadow.
- ✓ The hinge is snap-in and the closure system has an 'finger recess' design.
- ✓ 2 pan well type

Product number	Dimension	Material			Hinge breakage
		cover	base	Sliding	push hinge area
E506	67.8 x 34 x 18.5	SAN+ABS	SAN+ABS	ABS	≥1.8kgf
	Pan well 27 x 22.4 x 4.2 (capacity appr.2.4 ml per pan well)				
	Sliding 52 x 23.4 x 6 (capacity appr.7ml)				

# E506A rectangular compact



- ✓ It is suitable for eye shadow, blush, lip-cream and eye shadow.
- ✓ The hinge is snap-in and the closure system has an 'finger recess' design.
- ✓ 3 pan well type

Product number	Dimension	Material			Hinge breakage
		cover	base	Sliding	push hinge area
E506A	67.8 x 34 x 18.5	SAN+ABS	SAN+ABS	ABS	≥1.8kgf
	Pan well 22.45 x 17.6 x 3.8 (capacity appr.1.4 ml per pan well)				
	Sliding 52 x 23.4 x 6 (capacity appr.7ml)				

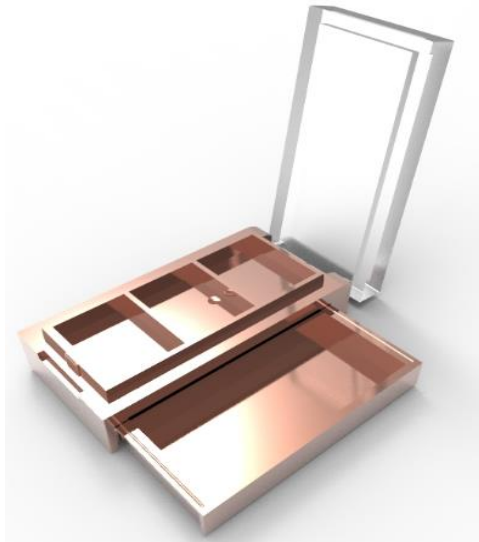
# E506B rectangular compact



- ✓ It is suitable for eye shadow, blush, lip-cream and eye shadow.
- ✓ The hinge is snap-in and the closure system has an 'finger recess' design.

Product number	Dimension	Material			Hinge breakage
		cover	base	Sliding	push hinge area
E506B	67.8 x 34 x 18.5	SAN+ABS	SAN+ABS	ABS	≥1.8kgf
	Pan well 55.59 x 22.45 x 3.8 (capacity appr.4.5ml)				
	Sliding 52 x 23.4 x 6 (capacity appr.7ml)				

# E506C rectangular compact



- ✓ It is suitable for eye shadow, blush, lip-cream and eye shadow.
- ✓ The hinge is snap-in and the closure system has an 'finger recess' design.
- ✓ 3 pan well type

Product number	Dimension	Material			Hinge breakage
		cover	base	Sliding	push hinge area
E506C	67.8 x 34 x 20.7	SAN+ABS	SAN+ABS	ABS	≥1.8kgf
	Pan well 55.59 x 22.45 x 3.8 (capacity appr.4.5 ml per pan well)				
	Sliding 52 x 23.4 x 6 (capacity appr.7ml)				



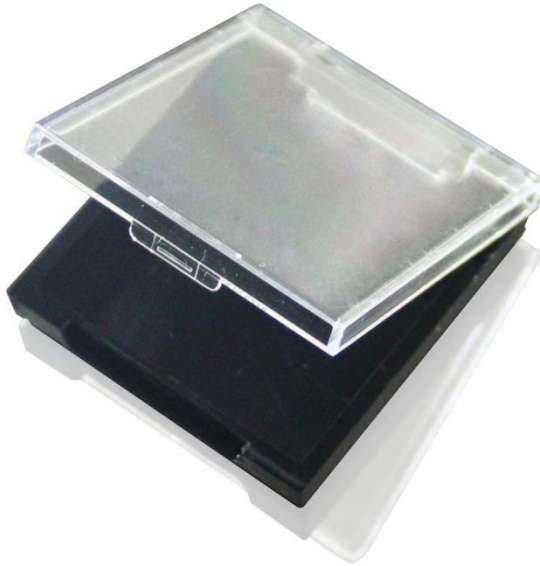
# E709 rectangular compact



- ✓ It is suitable for eye shadow and lip-cream.
- ✓ The hinge is hinge-pin and the closure system has an 'finger recess' design.

Product number	Dimension	Material			Hinge breakage
		cover	Insert	base	push hinge area
E709	82.3 x 40.35 x 15.15	SAN/ SAN+ABS	SAN+ABS	SAN+ABS	≥1.8kgf
	Pan well diameter 20.35 height 3.8 (capacity appr.1.1ml per pan well)				

# E712 square compact



- ✓ It is suitable for eye shadow or blush.
- ✓ The hinge is snap-in and the closure system has an 'finger recess' design.

Product number	Dimension	Material			Hinge breakage
		cover	Insert	base	push hinge area
E712	57.2 x 55.1 x 12.3	SAN/SAN+ABS	SAN+ABS	SAN+ABS	≥1.8kgf
	Pan well Dimensions: bake injection				

# E720 square compact

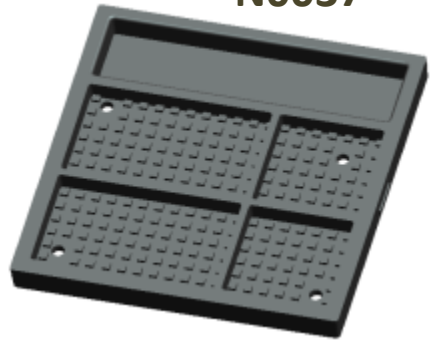


- ✓ It is suitable for eye shadow or blush.
- ✓ The hinge is snap-in and the closure system has an 'finger recess' design.

Product number	Dimension	Material		Hinge breakage
		cover	base	push hinge area
E720	39.99 x 39.99 x 8.74	SAN/SAN+ABS	SAN/SAN+ABS	≥1.5kgf
	Pan well 29.06 x 28.05 x 4.46 (capacity appr.3.5ml)			

# E758(+N0037) square palette

N0037



- ✓ It is suitable for eye shadow or blush.
- ✓ The hinge is hinge-pin and the closure system has an 'finger recess' design.
- ✓ Design of the pan well can be arranged

Product number	Dimension	Material			Hinge breakage
		cover	Insert	base	push hinge area
E758	67 x 67 x 12.1	SAN/ SAN+ABS	SAN+ABS	SAN+ABS	≥1.8kgf

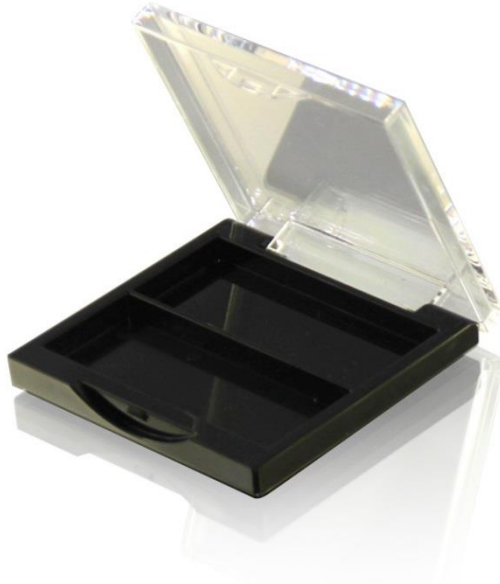
# E758A square palette



- ✓ It is suitable for eye shadow or blush.
- ✓ The hinge is hinge-pin and the closure system has an 'finger recess' design.
- ✓ Design of the pan well can be arranged

Product number	Dimension	Material			Hinge breakage
		cover	Insert	base	push hinge area
E758A	67 x 67 x 12.1	SAN/ SAN+ABS	SAN+ABS	SAN+ABS	≥1.8kgf
	23.0*23.0*H3.8deep( 1.9ml per well)				

# P101 square compact



- ✓ It is suitable for blush, lip-cream and eye shadow.
- ✓ The compacts can be supplied with, or without mirror in the lids.
- ✓ The hinge is snap-in and the closure system has an 'finger recess' design.
- ✓ The compacts can be molded in opaque or transparent materials

Product number	Dimension	Material		Hinge breakage
		cover	base	push hinge area
P101	50 x 50 x 10	SAN/ABS	SAN/SAN+ABS	≥1.8kgf
	Pan well 45.3 x 18.3 x 4.3 (appr.3.5ml)			
	Brush well 45.3 x 19 x 4mm			

# P104 square compact



- ✓ It is suitable for foundation and blush.
- ✓ The hinge is hinge-pin and the closure system has an 'finger recess' design.

Product number	Dimension	Material			Hinge breakage
		cover	insert	base	push hinge area
P104	65.2 x 65.2 x 17.4	SAN+ABS	SAN+ABS	SAN+ABS	≥2.0kgf
	Pan well 48.1 x 48.1 x 5.3 (capacity appr.12ml)				

# P105 compact



- ✓ It is suitable for eye shadow, lip-cream or blush.
- ✓ The hinge is hinge-pin and the closure system has an 'finger recess' design.

Product number	Dimension	Material			Hinge breakage
		cover	window	base	push hinge area
P105	95.3 x 52.8 x 14.2	SAN+ABS	SAN+ABS	SAN+ABS	≥2.0kgf
	Pan well 28 x 20 x 3.8 (appr.2ml per pan well)				



# P108 square compact



- ✓ It is suitable for eye powder or lip-cream.
- ✓ The hinge is snap-pin and the closure system has an 'finger recess' design.

Product number	Dimension	Material			Hinge breakage
		cover	Window	base	push hinge area
P108	65.3 x 65.3 x 12.8	SAN+ABS	SAN	SAN+ABS	≥1.36kgf
	Pan well 54.4 x 54.4 x 3.9 (appr.11ml per pan well)				

# P111 compact



- ✓ It is suitable for eye powder or lip-cream.
- ✓ The hinge is snap-pin and the closure system has an 'finger recess' design.

Product number	Dimension	Material		Hinge breakage
		cover	base	push hinge area
P111	95.15 x 65.1 x 13.55	SAN+ABS	Clear ABS/SAN+ABS	≥1.8kgf
	Pan well 28.5 x 25.8 x 4.6 deep (appr.3ml per pan well)			

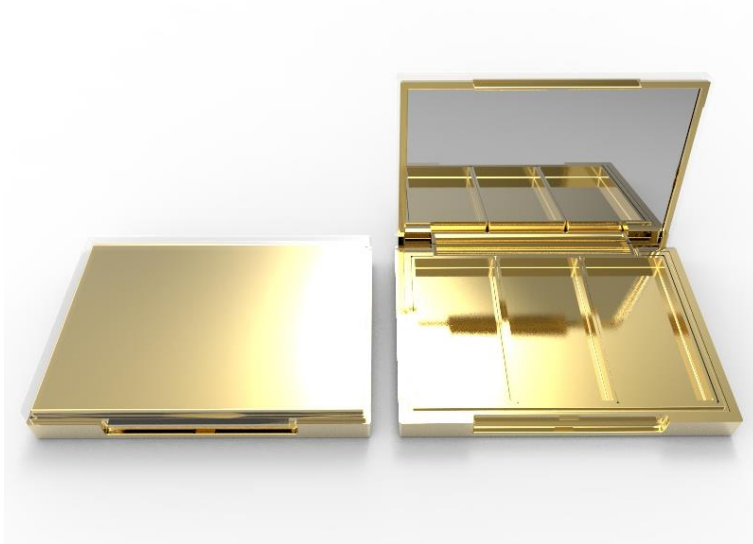
# P121 compact



- ✓ It is suitable for eye powder or lip-cream.
- ✓ The hinge is snap-pin and the closure system has an 'finger recess' design.

Product number	Dimension	Material					Hinge breakage
		Out cover	Inner cover	Pan house	Inserts	base	push hinge area
P121	87.8 x 62 x 13.8	PC	SAN+ABS	PP	SAN+ABS	SAN+ABS	≥1.8kgf
	Pan well 24 x 24 x 4.5 mm deep (appr.2.5ml)						

# P122 compact



- ✓ It is suitable for eye powder or lip-cream.
- ✓ The hinge is snap-pin and the closure system has an 'finger recess' design.

Product number	Dimension	Material					
		Out cover	Inner cover	Mirror	Pan house	Inserts	base
P122	87.8 x 62 x 13.8	PC	SAN+ABS	Glass	PP	SAN+ABS	SAN+ABS
	Pan well 50.1 x 24 x 4.5 mm deep (appr.5ml)						

# P147 compact



- ✓ It is suitable for eye shadow or lip-cream.
- ✓ The hinge is hinge-pin and the closure system has an 'finger recess' design.

Product number	Dimension	Material				Hinge breakage
		cover	lens	base	plate	push hinge area
P147	79.9 x 76 x 15.5	SAN+ABS	SAN	SAN+ABS	SAN+ABS	≥1.8kgf
	Pan well 31.6 x 20.65 x 4.5 (capacity appr 2.7ml per well)					

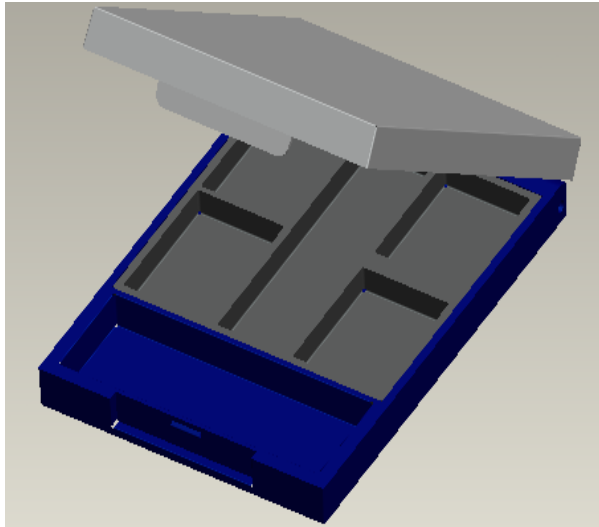
## P159 compact



- ✓ It is suitable for eye shadow, blush or foundation powder.
- ✓ The hinge is hinge-pin and the closure system has an 'finger recess' design.

Product number	Dimension	Material				Hinge breakage
		cover	mirror	Insert	base	push hinge area
P159	57 x 57 x 17.3	SAN+ ABS	glass	SAN+ ABS	SAN+ ABS	≥1.8kgf
	Pan well diameter 40.6 height 4 (capacity appr. 5ml)					

# P160 compact



- ✓ It is suitable for eye shadow, blush.
- ✓ The hinge is hinge-pin and the closure system has an 'finger recess' design.

Product number	Dimension	Material				Hinge breakage
		cover	Mirror	inserts	base	push hinge area
P160	84 x 60 x 14	SAN+ABS	GLASS	AS+ABS	AS+ABS	≥1.8kgf
	24.2 x 18.2 x 4.3 deep (appr 1.8ml per well) 52.4 x 14.3 x 4.3 deep (appr 3ml) 25.7 x 18.2 x 4.3 deep (appr 1.9ml per well)					

# P160A compact



- ✓ It is suitable for eye shadow, blush.
- ✓ The hinge is hinge-pin and the closure system has an 'finger recess' design.

Product number	Dimension	Material				Hinge breakage
		cover	Mirror	inserts	base	push hinge area
P160A	84 x 60 x 14	SAN+ABS	GLASS	AS+ABS	AS+ABS	≥1.8kgf
	56.6 x 55 x 5.7 deep					



# P162 compact



- ✓ It is suitable for eye shadow, blush.
- ✓ The hinge is hinge-pin and the closure system has an 'finger recess' design.

Product number	Dimension	Material		Hinge breakage
		cover	base	push hinge area
P162	53 x 100 x 12.3	SAN+ABS	AS+ABS	≥1.8kgf
	Pan well (capacity appr.26ml)			

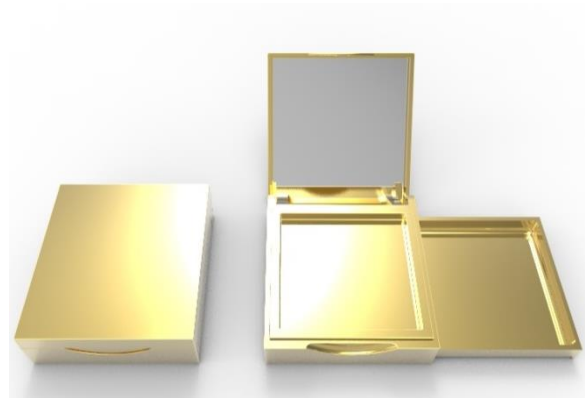
# P164 compact



- ✓ It is suitable for eye shadow, blush .
- ✓ The hinge is hinge-pin and the closure system has an 'finger recess' design.

Product number	Dimension	Material			Hinge breakage
		cover	Window	base	push hinge area
P164	57 x 58 x 12.5	SAN+ABS	SAN	AS+ABS	≥1.8kgf

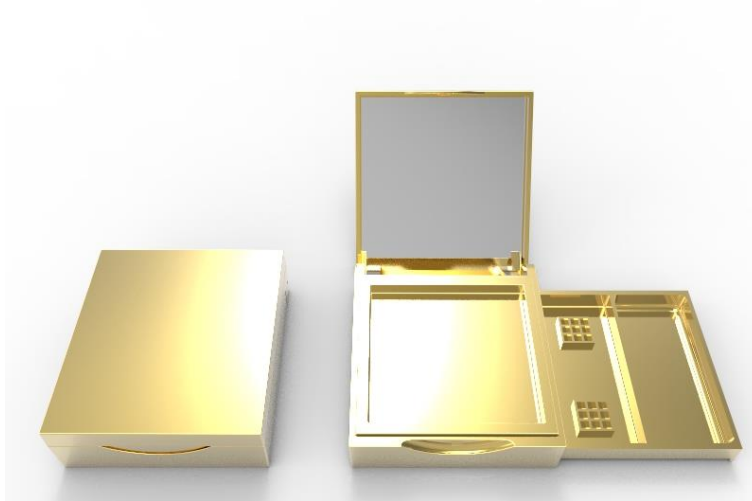
# P165A compact



- ✓ It is suitable for eye shadow, blush and lip-cream.
- ✓ The hinge is hinge-pin and the closure system has an 'finger recess' design.

Product number	Dimension	Material			
		cover	Insert	base	Sliding
P165A	64.1 x 57.9 x 20	SAN+ABS	SAN+ABS	ABS	ABS
	Pan well Dimensions: 47.7x 47.7 x 4 deep (appr.9ml) 51.2 x 47 x 6 deep (appr.14ml)				

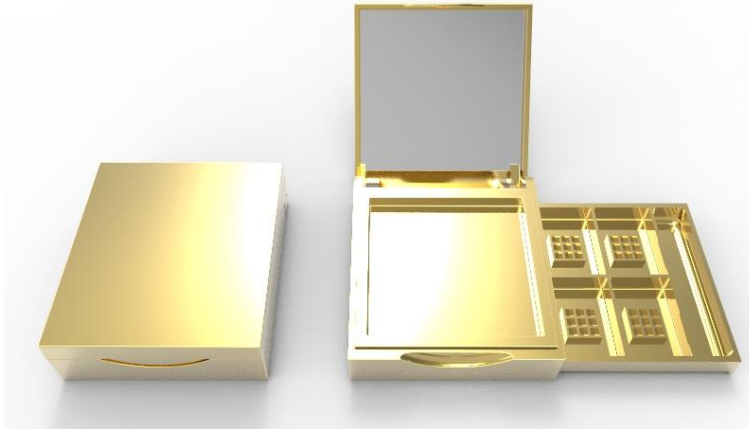
# P165B compact



- ✓ It is suitable for eye shadow, blush and lip-cream.
- ✓ The hinge is hinge-pin and the closure system has an 'finger recess' design.

Product number	Dimension	Material			
		cover	Insert	base	Sliding
P165B	64.1 x 57.9 x 20	SAN+ABS	SAN+ABS	ABS	ABS
	Pan well Dimensions: 47.7x 47.7 x 4 deep (appr.9ml) 51.5 x 23.15 x 4 deep (appr.4.7ml)				

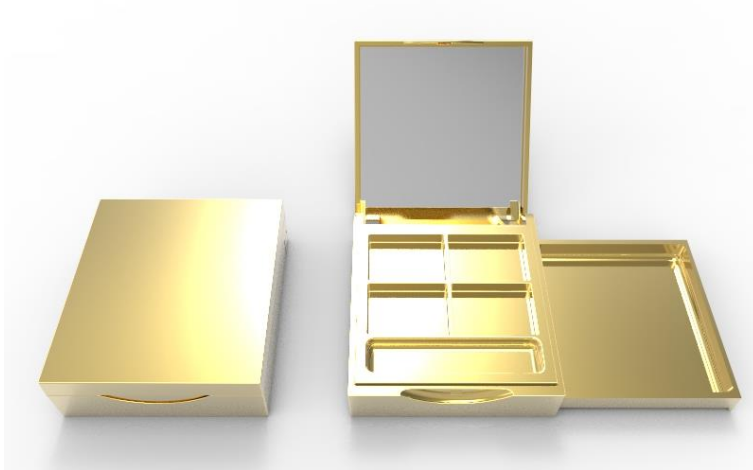
# P165C compact



- ✓ It is suitable for eye shadow, blush and lip-cream.
- ✓ The hinge is hinge-pin and the closure system has an 'finger recess' design.

Product number	Dimension	Material			
		cover	Insert	base	Sliding
P165C	64.1 x 57.9 x 20	SAN+ABS	SAN+ABS	ABS	ABS
	Pan well Dimensions: 47.7x 47.7 x 4 deep (appr.9ml) 25.25 x 17.5 x 4 deep (appr.1.6ml per pan well)				

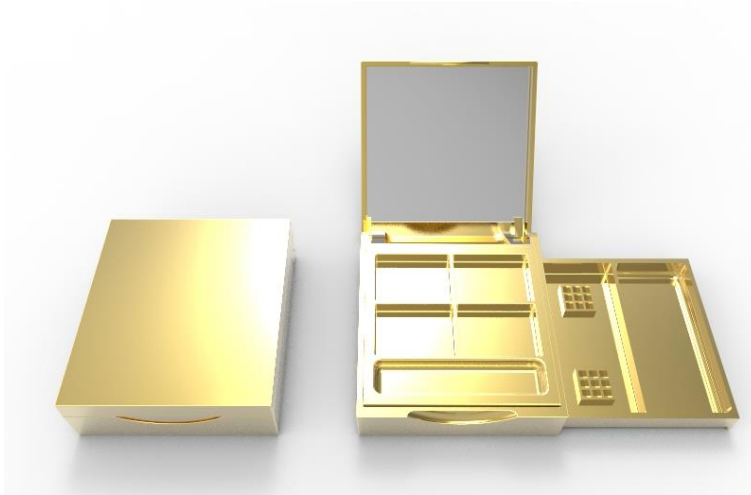
# P165D compact



- ✓ It is suitable for eye shadow, blush and lip-cream.
- ✓ The hinge is hinge-pin and the closure system has an 'finger recess' design.

Product number	Dimension	Material			
		cover	Insert	base	Sliding
P165D	64.1 x 57.9 x 20	SAN+ABS	SAN+ABS	ABS	ABS
	Pan well Dimensions: 23.4 x 17.4 x4 deep (appr.1.5ml per pan well) 51.2 x 47 x 6 deep (appr.14ml)				

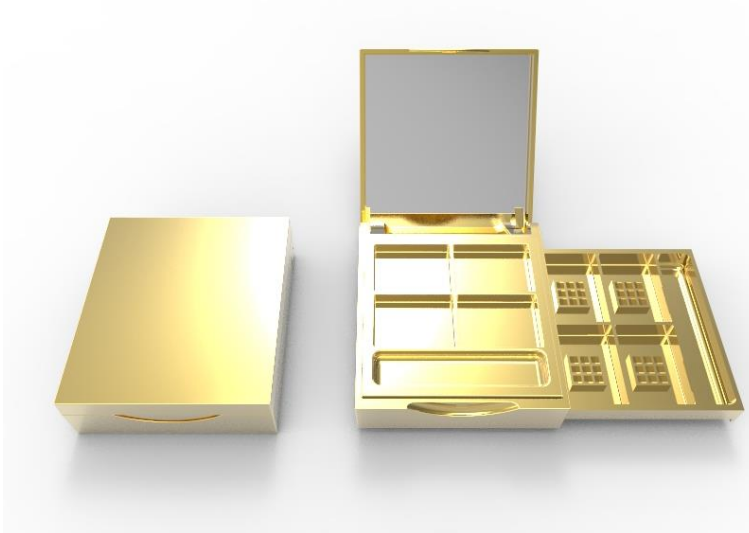
# P165E compact



- ✓ It is suitable for eye shadow, blush and lip-cream.
- ✓ The hinge is hinge-pin and the closure system has an 'finger recess' design.

Product number	Dimension	Material			
		cover	Insert	base	Sliding
P165D	64.1 x 57.9 x 20	SAN+ABS	SAN+ABS	ABS	ABS
Pan well Dimensions:					
23.4 x 17.4 x4 deep (appr.1.5ml per pan well)					
51.5 x23.15 x 4 deep (appr.4.7ml)					

# P165F compact



- ✓ It is suitable for eye shadow, blush and lip-cream.
- ✓ The hinge is hinge-pin and the closure system has an 'finger recess' design.

Product number	Dimension	Material			
		cover	Insert	base	Sliding
P165F	64.1 x 57.9 x 20	SAN+ABS	SAN+ABS	ABS	ABS
Pan well Dimensions: 23.4 x 17.4 x4 deep (appr.1.5ml per pan well) 25.25 x 17.5 x 4 deep (appr.1.6ml per pan well)					



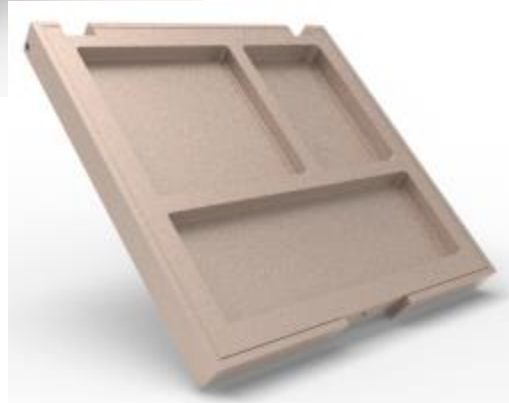
# P194 compact



- ✓ It is suitable for eye shadow, blush and lip-cream.
- ✓ The hinge is hinge-pin and the closure system has an 'finger recess' design.

Product number	Dimension	Material		
		cover	Mirror	base
P194	60.3 x 60.3 x 15.25	ABS	glass	ABS

# P199 compact



- ✓ It is suitable for eye shadow, blush and lip-cream.
- ✓ The hinge is hinge-pin and the closure system has an 'finger recess' design.

Product number	Dimension	Material			
		cover	Mirror	Inserts	base
P199	100 x 100 x 18.7	ABS	glass	ABS	ABS

# P199B compact



- ✓ It is suitable for eye shadow, blush and lip-cream.
- ✓ The hinge is hinge-pin and the closure system has an 'finger recess' design.

Product number	Dimension	Material				Hinge breakage
		cover	Mirror	Inserts	base	push hinge area
P199B	100 x 100 x 18.7	ABS	glass	ABS	ABS	≥1.5kgf
	Pan well Dimensions: 27.0*22.4*4deep(appr.2.4ml)*9 cell +83.8*12.4*6.0(brush cell)					

# P203 compact



- ✓ It is suitable for eye shadow, blush and lip-cream.
- ✓ The hinge is hinge-pin and the closure system has an 'finger recess' design.

Product number	Dimension	Material			
		cover	Window	Inserts	base
P203	66 x 66 x 16.1	ABS	ABS	ABS	ABS

## P212 compact



- ✓ It is suitable for eye shadow, blush and lip-cream.
- ✓ The hinge is hinge-pin and the closure system has an 'finger recess' design.

Product number	Dimension	Material			
		cover	Mirror	Weight	base
P212	84.25 x 60 x 14	SAN+ABS	GLASS	Fe	SAN+ABS
	Pan well Dimensions: 69.48 x 45.5 x 4.8 deep (appr. 15.1ml)				

# P218 compact



- ✓ It is suitable for eye shadow, blush and lip-cream.
- ✓ The hinge is hinge-pin and the closure system has an 'finger recess' design.

Product number	Dimension	Material				Hinge breakage
		cover	Mirror	Inserts	base	push hinge area
P218	100 x 100 x 18.7	ABS	glass	ABS	ABS	≥1.5kgf
	Pan well Dimensions: 24.95*24.95*3.5 deep (appr. 2.0ml) *9 cell					

# P226 compact



- ✓ It is suitable for eye shadow, blush and lip-cream.
- ✓ The hinge is hinge-pin and the closure system has an 'Magnetic system' design.

Product number	Dimension	Material					
		Outer Cover	Inner Cover	Mirror	Pan House	Inserts	base
P226	87.8 x 62 x 13.8	PC	SAN+ABS	Glass	PP	SAN+ABS	SAN+ABS
	Pan well Dimensions: 78.15 x 51.95 x5.3 mm deep (appr.21.5ml)						

# P227 compact



- ✓ It is suitable for eye shadow, blush and lip-cream.
- ✓ The hinge is hinge-pin and the closure system has an 'Magnetic system' design.

Product number	Dimension	Material					Hinge breakage
		cover	Mirror	Inserts	base	Magnet	push hinge area
P227	68.1 x 67.2 x 12.0	ABS	glass	ABS	ABS	iron	≥1.8kgf
	Pan well Dimensions: 22.8*22.8*4.6 deep (appr. 4*2.38ml)						



# P234 compact



- ✓ It is suitable for eye shadow, blush and lip-cream.
- ✓ The hinge is hinge-pin and the closure system has an 'finger recess' design.

Product number	Dimension	Material				Hinge breakage
		Top	Cover	Inserts	base	push hinge area
P234	Size L80 x W80 x H14.7 mm	PMMA	glass	ABS	ABS	≥1.8kgf
	Pan well Dimensions: 21.0*21.0*5.0 deep, 32.38*21.0*5.0 deep, 44.5*21.0*5.0 deep (appr.20.0ml)					

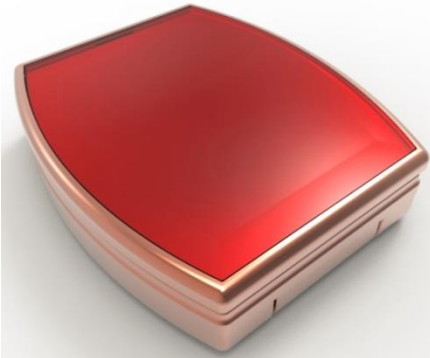
## P235 compact



- ✓ It is suitable for eye shadow, blush and lip-cream.
- ✓ The hinge is hinge-pin and the closure system has an 'finger recess' design.

Product number	Dimension	Material					Hinge breakage
		cover	Mirror	Magnet	Inserts	base	push hinge area
P235	Size: L68.1 x W67.2 x H12.0mm	ABS	glass	Iron	ABS	ABS	≥1.8kgf
	Pan well Dimensions: 22.8*22.8*4.6 deep (appr.4 x 2.38ml)						

## P237 compact



- ✓ It is suitable for eye shadow, blush and lip-cream.
- ✓ The hinge is hinge-pin and the closure system has an 'finger recess' design.

Product number	Dimension	Material							Hinge breakage
		Top	cover	Mirror	Middle	Mirror2	base	Push	push hinge area
P237	Size:L70.0 x W60.0 x H 20.8mm	PMMA	ABS	glass	ABS	glass	ABS	PP	≥1.8kgf
	Pan well Dimensions: L57.0*W50.0*H4.30 deep (appr.11.0ml)								

# P243 compact



- ✓ It is suitable for eye shadow, blush and power.
- ✓ The hinge is hinge-pin and the closure system has an 'finger recess' design.

Product number	Dimension	Material				Hinge breakage
		cover	Mirror	base	Insert	push hinge area
P243	Size:L80.0 x W80.0 x H 11.6mm	ABS	glass	ABS	ABS	≥1.8kgf
	Pan well Dimensions: 21.0*21.0*4.9 deep(appr.2.1ml)*4cell, 32.38*21.0*4.9 deep(appr.3.3ml)*2cell, 44.5*21.0*4.9 deep(appr.4.5ml)*1cell.					

## P246 compact



- ✓ It is suitable for eye shadow, blush and power.
- ✓ The hinge is hinge-pin and the closure system has an 'finger recess' design.

Product number	Dimension	Material				Hinge breakage
		cover	Mirror	Insert	base	push hinge area
P246	Size:L80.0 x W51.4 x H 11.2mm	ABS	glass	ABS	ABS	≥1.8kgf
	Pan well Dimensions: 16.4*36.7*4.2 deep(appr.2.5ml)*2cell 24.4*17.8*4.2 deep(appr.1.8ml)*4cell					

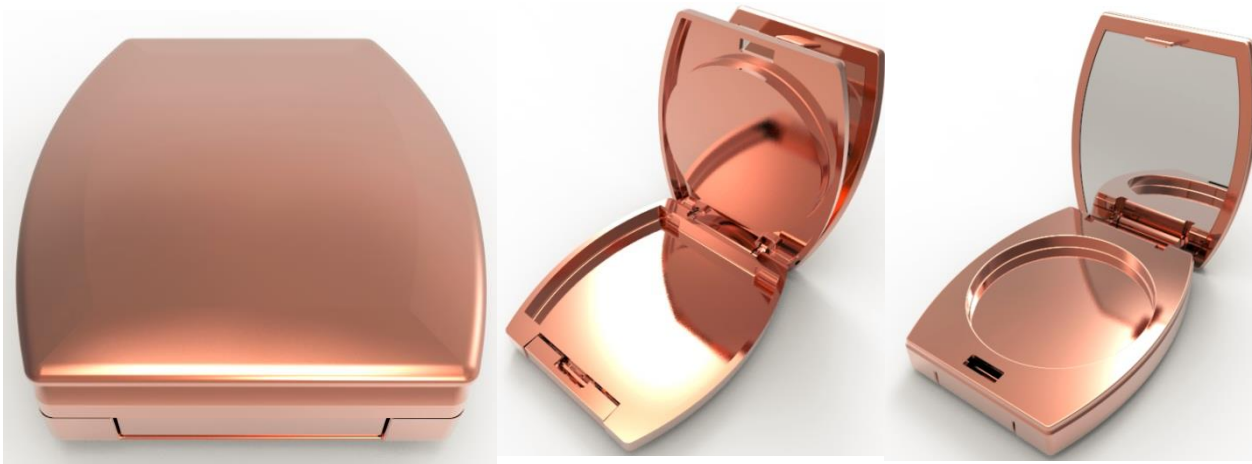
## P247 compact



- ✓ It is suitable for eye shadow, blush and power.
- ✓ The hinge is hinge-pin and the closure system has an 'finger recess' design.

Product number	Dimension	Material				Hinge breakage
		cover	Mirror	Insert	base	push hinge area
P247	Size:L80.0 x W51.4 x H 11.2mm	ABS	glass	ABS	ABS	≥1.8kgf
	Pan well Dimensions: 20.5*20.5*4.2 deep(appr.1.7ml)*4cell 42.1*17.3*4.2 deep(appr.3.0ml)*2cell					

# P248 compact



- ✓ It is suitable for eye shadow, blush and powder.
- ✓ The hinge is hinge-pin and the closure system has an 'finger recess' design.

Product number	Dimension	Material					Hinge breakage
		cover	Mirror	Middle	base	push	push hinge area
P248	Size:L70.0 x W60.0 x H 19.5mm	ABS	glass	ABS	ABS	PP	≥1.8kgf
	Pan well Dimensions: L57.0*W50.0*H4.30deep (appr.11.0ml)						

# P249 compact



- ✓ It is suitable for eye shadow, blush and power.
- ✓ The hinge is hinge-pin and the closure system has an 'finger recess' design.

Product number	Dimension	Material					Hinge breakage
		cover	Inner cover	Mirror	Middle	base	push hinge area
P249	Size:L87.8 x W62.0 x H 13.8mm	PC	SAN+ABS	glass	SAN+ABS	SAN+ABS	≥1.8kgf
	Pan well Dimensions: 24.35 x 24.35 x 4.5 mm deep (appr.2.6ml)*6pcs						



## P250 compact



- ✓ It is suitable for eye shadow, blush and power.
- ✓ The hinge is hinge-pin and the closure system has an 'finger recess' design.

Product number	Dimension	Material			Hinge breakage
		cover	Mirror	base	push hinge area
P250	Size:L80.0 x W80.0 x H 11.6mm	ABS	glass	ABS	≥1.8kgf
	Pan well Dimensions: 73.39*73.39*5.0deep(appr.26.8ml)				

# P251 compact



- ✓ It is suitable for eye shadow, blush and power.
- ✓ The hinge is hinge-pin and the closure system has an 'finger recess' design.

Product number	Dimension	Material				Hinge breakage
		cover	Mirror	Insert	base	push hinge area
P251	Size:L80.0 x W80.0 x H 11.6mm	ABS	glass	ABS	ABS	≥1.8kgf
	Pan well Dimensions: 19.55*19.55*5.1 deep(appr.1.95ml)*9cell					

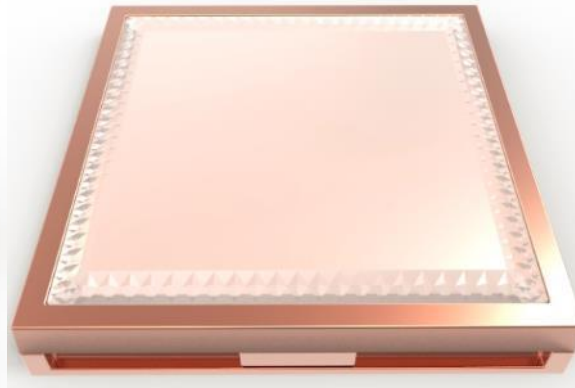
# P252 compact



- ✓ It is suitable for eye shadow, blush and powder.
- ✓ The hinge is hinge-pin and the closure system has an 'finger recess' design.

Product number	Dimension	Material			Hinge breakage
		Top	cover	base	push hinge area
P252	Size:L80.0 x W80.0 x H 14.7mm	PMMA	ABS	ABS	≥1.8kgf
	Pan well Dimensions: 73.39*73.39*5.0 deep(appr.26.8ml)				

# P253 compact



- ✓ It is suitable for eye shadow, blush and powder.
- ✓ The hinge is hinge-pin and the closure system has an 'finger recess' design.

Product number	Dimension	Material				Hinge breakage
		Top	cover	Insert	base	push hinge area
P253	Size:L80.0 x W80.0 x H 14.7mm	PMMA	ABS	ABS	ABS	≥1.8kgf
	Pan well Dimensions: 20.5*20.5*5.0 deep(appr.2.1ml)*9cell					

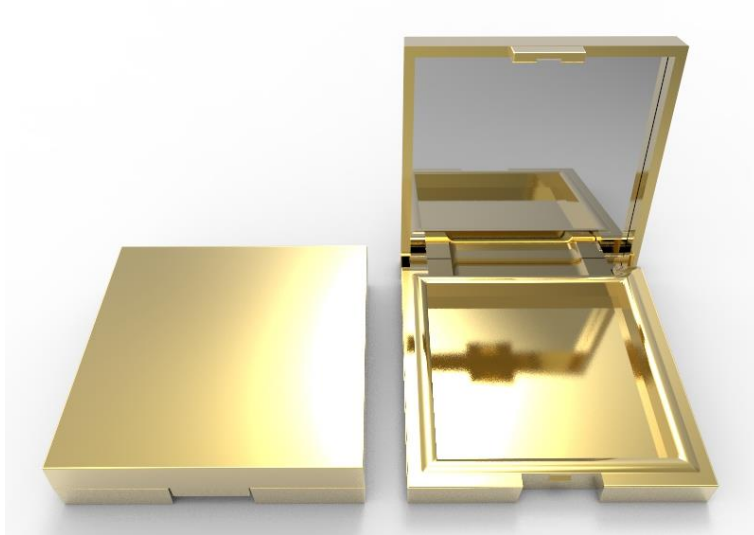
## P254 compact



- ✓ It is suitable for eye shadow, blush and powder.
- ✓ The hinge is hinge-pin and the closure system has an 'finger recess' design.

Product number	Dimension	Material					Hinge breakage
		Outer cover	mirror	Pan house	Insert	base	push hinge area
P254	Size:L87.95 x W62.1 x H 13.8mm	PET	glass	PP	SAN+ABS	SAN+ABS	≥1.8kgf
	Pan well Dimensions: 78.15x51.95x5.3mm deep (appr.21.5ml)						

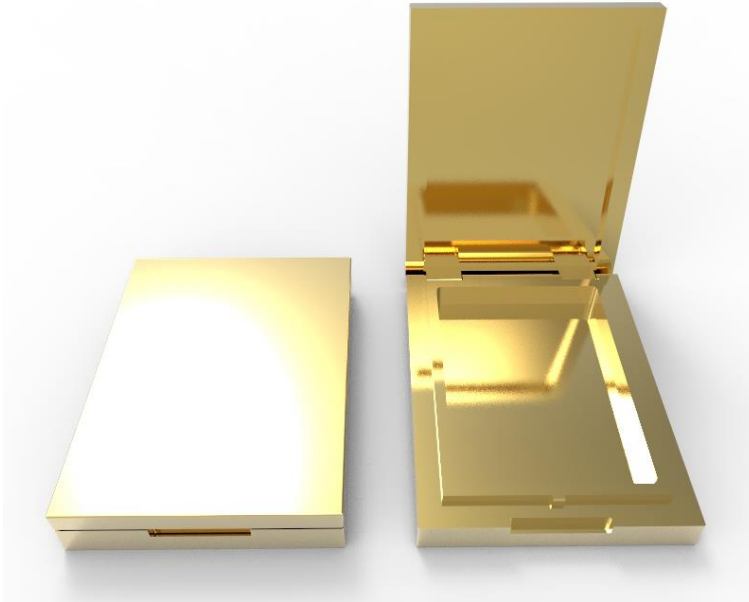
# P258 compact



- ✓ It is suitable for eye shadow, blush and powder.
- ✓ The hinge is hinge-pin and the closure system has an 'finger recess' design.

Product number	Dimension	Material		
		cover	Base	Mirror
P258	Size:L70.5 x W70.5 x H 16.4mm	ABS	ABS	Glass
	Pan well Dimensions: 55.8x55.8 x 6.0deep (appr. 18.6ml)			

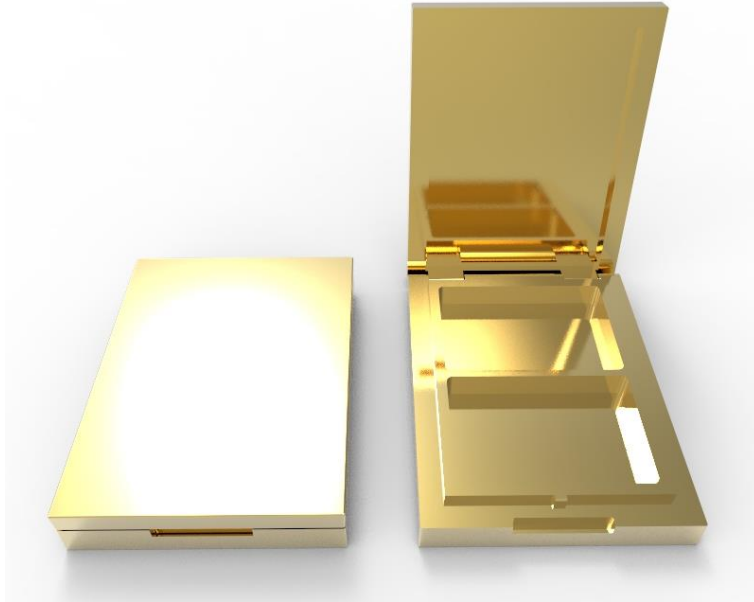
# P260 compact



- ✓ It is suitable for eye shadow, blush and powder.
- ✓ The hinge is hinge-pin and the closure system has an 'finger recess' design.

Product number	Dimension	Material	
		cover	base
P260	Size:L51.96 x W39.98 x H9.2mm	SAN/SAN+ABS	SAN/SAN+ABS
	Pan well Dimensions: 29.16 x 40.39 x 4.4 deep (appr.5.0ml)		

# P261 compact



- ✓ It is suitable for eye shadow, blush and powder.
- ✓ The hinge is hinge-pin and the closure system has an 'finger recess' design.

Product number	Dimension	Material	
		cover	base
P261	Size:L51.96 x W39.98 x H9.2mm	SAN/SAN+ABS	SAN/SAN+ABS
	Pan well Dimensions: 29.16 x 19.56 x 4.4 deep*2Cell (appr. 5.0ml)		



# P262 compact



- ✓ It is suitable for eye shadow, blush and power.
- ✓ The hinge is hinge-pin and the closure system has an 'finger recess' design.

Product number	Dimension	Material	
		cover	base
P262	Size:L51.96 x W39.98 x H9.2mm	SAN/SAN+ABS	SAN/SAN+ABS
	Panwell Dimensions: 24.33x24.33x4.4*2Cell +29.16 x 10.29 x 4.4 deep (appr.4.6ml)		

# SP-A01A compact



- ✓ It is suitable for eye shadow, blush.
- ✓ The hinge is snap-in and the closure system has an 'finger recess' design.

Product number	Dimension	Material		Hinge breakage
		cover	base	push hinge area
Sp-A01A	54.15 x 54.15 x 10.15	SAN+ABS	SAN+ABS	≥1.8kgf
	Pan well 50.3 x 44.65 x 4.5 (capacity appr.10ml)			

# SP-A01B compact



- ✓ It is suitable for eye shadow, blush.
- ✓ The hinge is snap-in and the closure system has an 'finger recess' design.

Product number	Dimension	Material		Hinge breakage
		cover	base	push hinge area
Sp-A01B	54.15 x 54.15 x 10.15	SAN+ABS	SAN+ABS	≥1.8kgf
	Pan well 50.4 x 29.5 x 4.5 (capacity appr.6.5ml)			

# SP-A01C compact



- ✓ It is suitable for eye shadow, blush.
- ✓ The hinge is snap-in and the closure system has an 'finger recess' design.

Product number	Dimension	Material		Hinge breakage
		cover	base	push hinge area
Sp-A01C	54.15 x 54.15 x 10.15	SAN+ABS	SAN+ABS	≥1.8kgf
	Pan well 14.8 x 16.28 x 4.5 (capacity appr.1ml)			

# SP-A01D compact



- ✓ It is suitable for eye shadow, blush.
- ✓ The hinge is snap-in and the closure system has an 'finger recess' design.

Product number	Dimension	Material		Hinge breakage
		cover	base	push hinge area
Sp-A01D	54.15 x 26.99 x 10.15	SAN+ABS	SAN+ABS	≥1.8kgf
	Pan well 50.4 x 18.3 x 4.5 (capacity appr.4ml)			

# SP-A01E compact



- ✓ It is suitable for eye shadow, blush.
- ✓ The hinge is snap-in and the closure system has an 'finger recess' design.

Product number	Dimension	Material		Hinge breakage
		cover	base	push hinge area
Sp-A01A	54.15 x 26.99 x 10.15	SAN+ABS	SAN+ABS	≥1.8kgf
	Pan well 16.27 x 10.5 x 4.5 (capacity appr.0.7ml)			